

 **DURANGO™ CAULKING GUNS**

 **PAINT TRAYS AND LINERS**

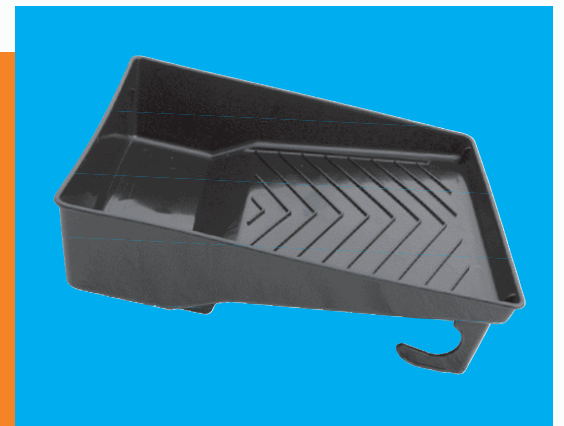
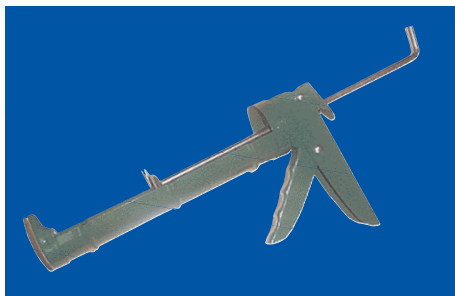
 **INDUSTRIAL BUCKETS & LIDS**

 **PAINT SUNDRY ACCESSORIES**

 **ECOSMART™**

**ENCORE**  **Plastics**  
corporation

# PRODUCT CATALOG



# WELCOME TO ENCORE

## OUR PROMISE

We will maintain a competitive edge in quality, service and productivity while providing the best total value to you.

## OUR GOAL

Encore Plastics Corporation will remain committed to our customers and will work together as a team to maintain the following value:

- Customers are the focus of everything we do. Our commitment is to understand and meet our customer's requirements the first time and every time.
- Employees are the strength of the company. We have made it a priority to hire the most qualified and loyal work force. We will work together as a team, treating each other with integrity, trust, and respect. We will provide a clean, safe work place where jobs are challenging and accomplishments are recognized.
- Quality of products, environment and work life is our foundation.
- Engineered innovation and creative development are our building blocks.
- Continuous improvement and the elimination of unnecessary costs are our way of life. Our culture and structure will promote communication, participation and involvement.
- Profits are key to our survival and growth. We will achieve a fair return on our investment and a competitive edge by being the low cost provider.

## TABLE OF CONTENTS

3	EcoSmart™
4	EcoSmart™ Accessories
5	Mix'n Measure Containers with Ratios
6	Mix'n Measure Lids   Paper, Metal Containers
7	Utility Containers and Pails   Translucent Pails
8	Pail Liners   Pro-Strain'r, Pro-Lin'r, Pro-Lin'r Jr.
9	Industrial Pails
10	Industrial Lids
11	Camo Pail and Bucket Seat
12	Wallpaper Trays, Mud Pan, Mini Roller Trays & Application Kits
13	Thermoformed Paint Tray Liners
14	Metal, Plastic Roller Trays, Thermoformed Paint Tray Liners & Mini Roller Trays
15	Accessories
16	Accessories
17	Accessories
18	Accessories
19	Durango™ Caulking Guns
20	Durango™ Caulking Guns - Economy & Do-it-Yourself
21	Durango™ Caulking Guns - Do-it-Yourself & Professional
22	Durango™ Caulking Guns Guide



Thank you for taking interest in our products. All sales are subject to Encore Plastic's Terms and Conditions of Sale. We reserve the right to alter or modify any product specifications without advance notice.

## EcoSmart™ CONTAINERS

- Products made from 100% recycled plastic.
- Containers are solvent resistant.
- Perfect for cleaning brushes.
- Great for mixing paint colors.
- EcoSmart™ pails are made from low melt HDPE to ensure the best possible impact strength and resistance to cracking.

- 5 Gallon is our Space Efficient pail. A smart design in product development allows more units per pallet in shipping, resulting in improved freight efficiency and can minimize the need for additional storage space in warehousing.



**01605 ECO**

**5 Quart EcoSmart™ Green Pail**

Case Count: 36  
Case Weight: 13  
Case Cube: 2.543



**20320 ECO**

**10 Quart Earth Day Green Pail**

Case Count: 12  
Case Weight: 11.4  
Case Cube: 1.784



**57640 ECO**

**5 Gallon .70mil EcoSmart™ Green Pail**

Case Count: 240  
Case Weight: 373  
Case Cube: 49.30  
Fits Lid: 53000 Eco



**53000 ECO**

**Snap-On EcoSmart™ Green Lid**

3.5 & 5 gallon Lid  
Case Count: 24  
Case Weight: 10.8  
Case Cube: 1.482

## EcoSmart™ Paint Trays and Liners



**02512 ECO**

**1 Quart - 9" Economy EcoSmart™ Roller Tray**

Case Count: 24  
Case Weight: 4.0 ??  
Case Cube: 1.536 ??



**45 ECO**

**11" EcoSmart™ Deepwell Tray**

Case Count: 5  
Case Weight: 17.4  
Case Cube: 1.388  
Fits 75 ECO Liner



**75 ECO**

**3 Quart EcoSmart™ Deepwell Paint Tray Liner**

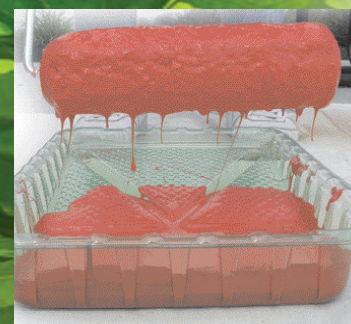
Case Count: 75  
Case Weight: 10.8  
Case Cube: 1.119  
Fits 45 ECO Tray



**02115 ECO**

**1 Quart EcoSmart™ Paint Tray Liner - Fits Universal 1 Quart Metal Trays**

Case Count: 100  
Case Weight: 12.0  
Case Cube: 0.760



- Solvent resistant.
- Exact sizing prevents liner slippage.
- Deep professional roller trays hold more paint.
- Paint color changes are fast and easy.
- Liners are disposable for fast clean up.

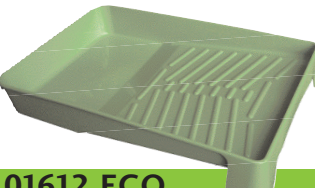


**02712 ECO**

**2 Quart - 9.5" EcoSmart™ Deepwell Green Tray**

Case Count: 24  
Case Weight: 10  
Case Cube: 1.348

Cover available



**01612 ECO**

**2 Quart - 11" EcoSmart™ Tightnest Tray**

Case Count: 12  
Case Weight: 9.8  
Case Cube: 1.802

Fits Encore 02110 PTL (See page 15)



**82177 ECO**

**6" EcoSmart™ Mini Roller Tray w Grid 24pack**

Case Count: 24  
Case Weight: 4.730  
Case Cube: ??

## EcoSmart™ ACCESSORIES

- Fits standard 1 gallon metal cans.
- Restricts air flow to keep brush moist.
- Wiping edge saves paint.
- Fits up to 4" brushes.
- Keeps rim clean.



**82101**

**BRUSH HOLDER™ EcoSmart™**

Case Count: 12  
Case Weight: 2.0  
Case Cube: 0.664

- Convenient wiping edge.
- Built-in brush holder (fits up to 4" brushes).
- Durable - for oil based paints and stains.
- Comfortable palm grip.



**82133**

**MINI PALM RIDER™ EcoSmart™**

Case Count: 14  
Case Weight: 6.8  
Case Cube: 1.013

- Two-Pack.
- Liners for easy clean-up and color changes.
- Durable - for oil based paints and stains.
- Liners disposable.



**82134**

**MINI PALM RIDER™ LINER (Two-Pack)**

Case Count: 18  
Case Weight: 4.8  
Case Cube: 1.013



**"EcoSmart™ products are made with Recycled Resin generated from our re-manufactured products"**



Available in a 14 count Display Case



Available in a 18 count (Two-Pack) Display Case



# MIX'n MEASURE™ CONTAINERS

- Container bottom is flat for easy mixing.
- Graduations are provided in both ounce and metric measurements.
- Containers are solvent resistant.
- Containers are safe for use with all paints, pastes, and adhesives.
- Contact Encore for information on maximum temperature.
- Customized printing is available to your company logo or design your own mixing ratios.
- 8oz, 16oz, 1 quart, 2.5 quart, 5 quarts contain ratios (3:1:1, 3:1:5%, 10%, 4:1:1, 4:2:1, 5:1:1, 18:6:1).
- Reusable and recyclable.
- Transparent containers to see liquids.
- Lids are sold separately.



- Measurements go up to 2oz and 60cc

**20002**

**2 ounce**  
Case Count: 500  
Case Weight: 6.6  
Case Cube: .705



- Measurements go up to 28oz, 250mL and 3/4 Liter

**LT41032**

**1 Quart with Ratios**  
Case Count: 100  
Case Weight: 8.4  
Case Cube: 1.253  
Fits Lid: PR410 (lids sold separately)



- Measurements go up to 6oz and 180mL

**LT30308**

**8 ounce with Ratios**  
Case Count: 500  
Case Weight: 12.0  
Case Cube: 1.442  
Fits Lid: PF303 (lids sold separately)



- Measurements go up to 64oz, 2qt and 2 Liters

**LS61086**

**2.5 Quart with Ratios**  
Case Count: 50  
Case Weight: 9.0  
Case Cube: 1.911  
Fits Lid: PF610 (lids sold separately)



- Measurements go up to 13oz and 400mL

**LT30916**

**1 Tall Pint (16 ounce)**  
Case Count: 500  
Case Weight: 21.6  
Case Cube: 2.542  
Fits Lid: PR309 (lids sold separately)



- Measurements go up to 112oz, 3-1/2qt and 3-1/2 Liters

**LS809160**

**5 Quart with Ratios**  
Case Count: 50  
Case Weight: 15.0  
Case Cube: 3.282  
Fits Lid: PF809 (lids sold separately)



- Measurements go up to 14oz and 400mL

**LS41016**

**1 Pint (16 ounce) with Ratios**  
Case Count: 500  
Case Weight: 23.2  
Case Cube: 3.204  
Fits Lid: PR410 (lids sold separately)



- Measurements go up to 112oz, 3-1/2qt and 3-1/2 Liters

**05166**

**5 Quart Ringfree Pail with ratios & Wire Handle**  
Case Count: 24  
Case Weight: 8.8  
Case Cube: 1.913  
Fits Lid: PF809 (lids sold separately)



- Measurements go up to 3-1/2 gal. & 14 Liters

**56511**

**5 Gallon Pail with Foam Grip Handle**  
Case Count: 20  
Case Weight: 33.5  
Case Cube: 5.910  
Fits Lid: 53000 (lids sold separately)



- Measurements go up to 256oz, 2 gal. and 7-1/2 Liters

**20325**

**10 Quart Ringfree Pail with Wire Handle**  
Case Count: 12  
Case Weight: 11.4  
Case Cube: 1.784



## LIDS

### For Mix'n Measure Containers

- Lids are Shown on individual containers (**Lids are sold separately**)
- Lids prevent accidental spills, keep the paint clean and guard against skimming.
- Keeps paint sealed overnight.

**PF303**

**Fits 8 ounce (30308)**  
Case Count: 100  
Case Weight: 1.2  
Case Cube: 0.20

**PR410**

**Fits both Pint & Quart (41017 & 41032)**  
Case Count: 100  
Case Weight: 3.0  
Case Cube: 0.564

**PF809**

**Fits 5 Quart (81166 & 05166)**  
Case Count: 50  
Case Weight: 5.4  
Case Cube: 1.042

**PR309**

**Fits Tall Pint (30916)**  
Case Count: 100  
Case Weight: 2.0  
Case Cube: 0.20

**PF610**

**Fits 2.5 Quart & 1/2 Gallon (61086)**  
Case Count: 50  
Case Weight: 3.2  
Case Cube: 0.567

**53000**

**Fits 5 Gallon (56511)**  
Case Count: 12/60  
Case Weight: 5.4/25.2  
Case Cube: .680/3.061

## METAL CONTAINERS

- Handy, lightweight, built to last, tin plated pails.
- Permanently embossed quart graduations inside the 5 quart pail.
- One seam, leak proof construction.
- Tapered for convenient storage.
- Durability makes these pails popular with contractors.



**22500**

**2.5 Quart with Handle**  
Case Count: 36  
Case Weight: 18.4  
Case Cube: 2.01

*Paper Liner available  
(See 5T1 - 2.5qt.)*



**25000**

**5 Quart with Handle**  
Case Count: 24  
Case Weight: 17.2  
Case Cube: 1.827

*Plastic & Paper Liners available  
(See 10T1 paper & page 9 for plastic liner)*



## PAPER CONTAINERS

- These disposable containers are a cost effective option for quick touch-ups.
- Great for faux painting, mixing custom colors, crafts and hobbies.
- The 2-1/2 quart and 5 quart are available with both quart and liter measurements.
- The 2-1/2 quart and 5 quart can also be used as a throw-away liner for the metal pails.
- Eliminates the messy clean-ups.



**2T1**

**1 Quart Touch n' Trim with Measurements**  
Case Count: 500  
Case Weight: 25.6  
Case Cube: 3.794

*(Each Stack of 25 containers is sleeved)*

**5T1**

**2.5 Quart Touch n' Trim with Measurements**  
Case Count: 40  
Case Weight: 4.45  
Case Cube: .998

**10T1**

**5 Quart Touch n' Trim with Measurements**  
Case Count: 100  
Case Weight: 18.8  
Case Cube: 3.681

## UTILITY CONTAINERS & PAILS



**61080**  
**5 Pint without Wire Handle**  
Case Count: 48  
Case Weight: 10.0  
Case Cube: 1.911



**61080**  
**5 Pint with Wire Handle**  
Case Count: 48 with handle  
Case Weight: 11.0  
Case Cube: 1.911



**05160**  
**5 Quart Red RF Pail**  
Case Count: 24  
Case Weight: 8.8  
Case Cube: 1.913



**01605**  
**5 Quart Silver Promotional Ringfree Pail**  
Case Count: 36  
Case Weight: 13.0  
Case Cube: 2.543



**06192**  
**10 Quart Blue Ringfree Pail**  
Case Count: 12  
Case Weight: 11.4  
Case Cube: 1.784



**06192**  
**6 Quart Bucket with Pour Spout**  
Case Count: 24  
Case Weight: 11.2  
Case Cube: 2.015



**12384**  
**12 Quart Blue Mop Bucket with Pour Spout**  
Case Count: 12  
Case Weight: 8.5  
Case Cube: 1.865

## TRANSLUCENT PAILS



- Solvent resistant.
- Transluents are offered in a variety pack.
- Colors are subject to change without notice.



**11128**  
**1 Gallon Translucent Pails Variety Pack**  
Case Count: 24  
Case Weight: 12.4  
Case Cube: 2.287



**31448**  
**3.5 Gallon Translucent Pails Variety Pack**  
Case Count: 12  
Case Weight: 19.4  
Case Cube: 2.979

## PAIL LINERS

- Our pail liner is a rugged, form-fitted plastic liner, which is thermoformed using durable polyethylene. Its seamless design of thick and evenly constructed walls and heavy contoured bottom help protect against leaks and spillage thus minimizing the risk of environmental contamination. Our pail liners can be used with liquids, pastes, or powders of varying density or viscosity. It is important to note that pail liners encourage easy and safe waste disposal, waste disposal, a "must" in today's industrial and manufacturing environments.



**05115**  
**5 Quart Pail Liner**  
Case Count: 100  
Case Weight: 9.6  
Case Cube: 1.814



**05150**  
**2 Gallon Pail Liner**  
Case Count: 60  
Case Weight: 11.6  
Case Cube: 2.582



**05175**  
**5 Gallon Pail Liner**  
Case Count: 50  
Case Weight: 18.2  
Case Cube: 4.381  
Fits: 50640, 57640, 51677 & 57677



- Great for quick color changes.
- Neatly discards for easy cost effective clean-up.
- Keeps our plastic pails clean and reusable.
- Molded lip keeps liner in place.

## PRO-STRAIN'R™

- Great for straining roller nap hair.
- Heavy duty lip - will not collapse.
- Built-in handle grip.
- Strains paint impurities and contaminants.
- Time saver - easy to use.
- Disposable for quick clean-up.



**05185**

**Pro-Strain'r™ Fits 3-1/2, 5 & 6 Gallon Pails**  
Case Count: 40  
Case Weight: 5.2  
Case Cube: 0.781



## PRO-LIN'R™

- Turns Encore's 5 gallon Pro. pail into a roller tote.
- Holds 2 gallons.
- Eliminates messy grates.
- Convenient roller frame handle holder
- Neatly discards for cost-effective clean-up.



**05180**

**5 Gallon Pro-Lin'r™ with Roller Grid**  
Case Count: 20  
Case Weight: 11.6  
Case Cube: 4.381



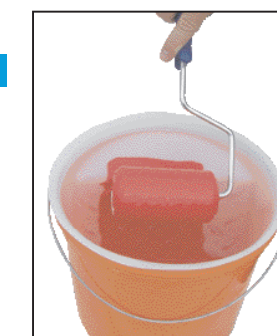
## PRO-LIN'R JR.™

- Turns most 5 quart pails into a roller tote.
- Designed for trim rollers.
- Eliminates messy grates.
- Easy to use - saves time.
- Ideal for use on ladder.
- Disposable for quick clean-up.



**05120**

**5 Quart Pro-Lin'r™ JR. with Roller Grid**  
Case Count: 48  
Case Weight: 6.2  
Case Cube: 1.40



# INDUSTRIAL PAILS



**LT704128**  
**1 Gallon White Pail**  
Case Count: 24  
Case Weight: 13.2  
Case Cube: 2.287



**20256**  
**2 Gallon White Pail**  
Case Count: 48/400  
Case Weight: 43.4/395.0  
Case Cube: 8.594/55.44



**30448 SE**  
**3.5 Gallon White 70 mil Space Efficient Pail**  
Case Count: 156  
Case Weight: 223.0  
Case Cube: 35.556



**30448**  
**3.5 Gallon White 70 mil Pro Pail**  
Case Count: 156  
Case Weight: 280  
Case Cube: 46.958



**75448**  
**3.5 Gallon 90 mil Pro Pail**  
Case Count: 156  
Case Weight: 307  
Case Cube: 46.958



**50640 SE**  
**5 Gallon White Space Efficient 70 mil Pail**  
Case Count: 240  
Case Weight: 411  
Case Cube: 49.30



**57640 SE**  
**5 Gallon Space Efficient 70 mil Pail**  
Case Count: 240  
Case Weight: 411  
Case Cube: 49.30



**50640**  
**5 Gallon White 70 mil Pro Pail**  
Case Count: 120  
Case Weight: 317  
Case Cube: 45.66



**57640**  
**5 Gallon 70 mil Pro Pail**  
Case Count: 120  
Case Weight: 317  
Case Cube: 50.66



**51677**  
**5 Gallon White 90 mil Pail**  
Case Count: 144  
Case Weight: 348  
Case Cube: 50.07



**57677**  
**5 Gallon 90 mil Pail**  
Case Count: 144  
Case Weight: 348  
Case Cube: 50.07



**60832**  
**6 Gallon White 90 mil Pail**  
Case Count: 96  
Case Weight: 295  
Case Cube: 47.95

- Encore pails are molded from a low melt HDPE to ensure the best possible impact strength and resistance to cracking. Encore's quality pails provide high standard shipping capabilities, eliminating danger of product contamination or loss. Encore pails are widely used for paints, coatings, varnishes, water sealants, concrete patching compounds, asphalt coatings, printing inks, soaps and detergents.
- Each pail is designed with reinforced saturn rings around the top to prevent distortion when carried.
- Uniform wall thickness for stacking strength.
- Tapered design for easy separation, maximum storage and shipping cube.
- High visibility offset graphics available. Maximum of four color sidewall print.
- We offer some items made from Post Consumer Resin. 100% recycled material. See Sales.
- The resin used in most of our white pails has the FDA approval for storing and packaging of food products. This only applies to products made from virgin material.



# INDUSTRIAL LIDS



**PR704**  
**1 Gallon White Pry Off Lid**  
Case Count: 24  
Case Weight: 3.35  
Case Cube: 0.348



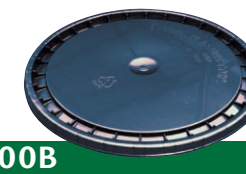
**20000**  
**2 Gallon White Tear-Strip Gasketed Lid**  
Case Count: 12/100  
Case Weight: 3.4/27  
Case Cube: 0.405/2.76



**50000**  
**TEAR-STRIP GASKETED LID 3.5, 5 & 6 Gallon Lid**  
Case Count: 12/48  
Case Weight: 7.8/31.2  
Case Cube: 0.992/4.012



**53000**  
**SNAP-ON LID White 3.5, 5 & 6 Gallon Lid**  
Case Count: 12/60  
Case Weight: 5.4/25.2  
Case Cube: 0.680/3.061



**53000B**  
**SNAP-ON LID Black 3.5, 5 & 6 Gallon Lid**  
Case Count: 12/60  
Case Weight: 5.4/25.2  
Case Cube: 0.680/3.061



**50400**  
**TEAR-STRIP LID WITH TINT PLUG 3.5, 5 & 6 Gallon Lid**  
Case Count: 48  
Case Weight: 29.8  
Case Cube: 4.012



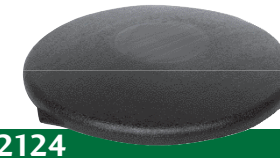
**50700**  
**TEAR-STRIP LID WITH SENIOR RIEKE™ 3.5, 5 & 6 Gallon Lid**  
Case Count: 48  
Case Weight: 33.2  
Case Cube: 4.456



Opened Senior Reike™ Self-Venting Flexspout



**50800**  
**TEAR-STRIP WITH SCREW CAP 3.5, 5 & 6 Gallon Lid**  
Case Count: 48  
Case Weight: 34  
Case Cube: 3.978



**82124**  
**Bucket Seat 3.5, 5 & 6 Gallon Lid**  
Case Count: 30  
Case Weight: 36.0  
Case Cube: 5.910



**82136**  
**GAMMA SEAL® 3.5, 5 & 6 Gallon Lid**  
Case Count: 6  
Case Weight: 7.0  
Case Cube: 0.75  
• Turn a 3.5, 5 & 6 gallon bucket into an airtight, leakproof and pest-proof storage container.

Custom colors are available.

• Minimum order requirement needed



• **Tear-Strip Lid** - Secure and tamper-resistant, manufactured to provide protection of the contents through handling, storage and transportation. When the product reaches its final destination, the cover can be easily removed with out cutting tools. Simply break the tab, strip off the edge and open by hand.

• **Snap-On Lid** - Planned for dry, lightweight products requiring constant access, this non-gasket cover is easily removed and resealed.

• **Tint Plug** - Can be conveniently removed and resealed simplifies the task of adding colorant.

• **Senior Rieke** - Retractable plastic pour spout offers a reliable seal and a variety of tamper-evident features.



## CAMO PAILS & BUCKET SEAT



**350047**

**5 Gallon Camo Space Efficient Pail Camo Green**

Case Count: 20  
Case Weight: 33.5  
Case Cube: 5.910



**350358**

**5 Gallon MOSSY OAK Tan Space Efficient Pail**

Case Count: 20  
Case Weight: 33.5  
Case Cube: 5.910



**350372**

**5 Gallon MOSSY OAK Black Space Efficient Pail**

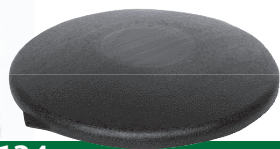
Case Count: 20  
Case Weight: 33.5  
Case Cube: 5.910



**350354**

**5 Gallon FISHOUFLAGE BASS Tan Space Efficient Pail**

Case Count: 20  
Case Weight: 33.5  
Case Cube: 5.910



**82124**

**Bucket Seat Black 3.5, 5 & 6 Gallon Lid**

Case Count: 30  
Case Weight: 36.0  
Case Cube: 5.910

### Bucket Seat Lid

- Excellent for camping, fishing or hunting.
- Store small garden tools.
- Great for kids - easy storage for small toys while providing a fun seat to sit on.
- It's convenient storage with a purpose.
- Turn your 3-1/2 and 5 gallon pail into a portable storage unit with a comfortable Bucket Seat.



**53000B**

**SNAP-ON LID Black 3.5, 5 & 6 Gallon Lid**

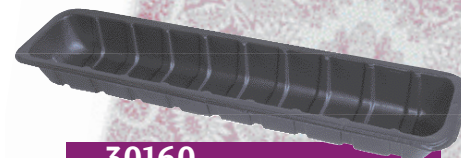
Case Count: 12/60  
Case Weight: 5.4/25.2  
Case Cube: 0.680/3.061

### Snap-On Lid

Planned for dry, lightweight products requiring constant access, this non-gasket cover is easily removed and resealed.



## WALLPAPER TRAYS



**30160**

**ECONOMY WALLPAPER TRAY**

Case Count: 25  
Case Weight: 13  
Case Cube: 1.65  
*(Special order/Minimum order required)*

- Reinforcing ribs for stability.
- Wallpaper or boarders
- Allows for automatic feeding through water.
- Ensures even wetting.
- Size L 31-3/4" x W 7-1/4" x H 3-1/4".



**32160**

**HEAVY DUTY WALLPAPER TRAY**

Case Count: 25  
Case Weight: 14.2  
Case Cube: 1.641

- Reinforcing ribs for stability.
- Molded handles for lift and carry.
- Allows for automatic feeding through water.
- Ensures even wetting.
- Size L 30" x W 8-3/8" x H 4".

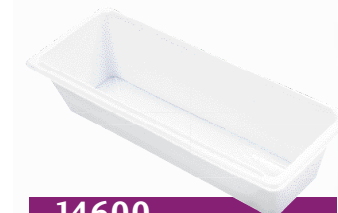


**14" WALLPAPER BORDER TRAY**

Case Count: 24  
Case Weight: 4.6  
Case Cube: 0.404

- Holds water or paste.

## MUD PAN



**14600**

**14" THERMOFORMED MUD PAN**

Case Count: 24  
Case Weight: 4.4  
Case Cube: 0.404

- Wiping edge to clean your blades.
- 3" bottom comfortable to hold.

## MINI ROLLER TRAYS

**4" TAN MINI ROLLER TRAY WITH GRID**

- For 3" or 4" paint rollers.
- EZ grip bottom.
- Multi-purpose.
- Solvent resistant.
- Reusable.



**82144**

**4" Roller Mini Tray**

Case Count: 12  
Case Weight: 2.272  
Case Cube: 0.2552

**7" BLACK MINI ROLLER TRAY**

- For 7" wide paint rollers.
- DIY and small rolling projects.
- Solvent resistant.
- Reusable.



**82170**

**7" Roller Mini Tray**

Case Count: 12  
Case Weight: 2.8  
Case Cube: 0.3684



**00512**

**4" Roller Mini Tray**

Case Count: 24  
Case Weight: 4.8  
Case Cube: 0.534

*Available in Display Case*



**01012**

**7" Roller Mini Tray**

Case Count: 24  
Case Weight: 5.4  
Case Cube: 0.534

**6" BLACK MINI ROLLER/EDGER TRAY**

- Brush holder.
- Built in paint edger loading area.
- For use with 3" up to 6" mini rollers.
- Solvent resistant.
- Reusable.



**82147**

**6" Roller Mini Tray**

Case Count: 24  
Case Weight: 3.600  
Case Cube: 0.527

# THERMOFORMED PAINT TRAY LINERS

## UNIVERSAL PTL



**02115**

**Economy Fits Universal  
1 Quart Metal Trays**

Case Count: 50  
Case Weight: 5.2  
Case Cube: 0.59



**02150**

**Jumbo - Fits most 4 Quart  
Metal Trays**

Case Count: 50  
Case Weight: 11  
Case Cube: 2.0

## FITS SHUR-LINE TRAY



**02100**

**Standard Fits Shur-Line  
1 Quart Metal Tray**

Case Count: 50  
Case Weight: 5.8  
Case Cube: 0.59



**02135**

**Deepwell Fits Shur-Line  
2 Quart Metal Tray**

Case Count: 50  
Case Weight: 7.0  
Case Cube: 0.841

## FITS WOOSTER TRAY



**02110**

**Oversized - Fits 11" Wooster  
1 Quart R402 Metal Tray**

Case Count: 50  
Case Weight: 6.6  
Case Cube: 1.400

*Fits Encore 01612 ECO Tray (see page 3)*



**02150**

**Jumbo - Fits Wooster R405  
4 Quart Metal Tray**

Case Count: 50  
Case Weight: 11.0  
Case Cube: 2.00

## FITS BEATTY TRAY



**02120**

**Standard Fits  
Encore & Beatty  
1 Quart Metal Tray**

Case Count: 50  
Case Weight: 6.0  
Case Cube: .841

**02121**

**Oversized Clear - Fits  
Beatty Canadian  
1 Quart Metal Tray**

Case Count: 50  
Case Weight: 6.8  
Case Cube: .841

## FITS BESTT LIEBCO TRAY



**02140**

**Deepwell Black - Fits Bestt  
Liebco 2 Quart Metal Tray**

Case Count: 50  
Case Weight: 7.6  
Case Cube: .841

## FITS SHERWIN WILLIAMS TRAY



**02125**

**Standard Clear Fits Sherwin  
Williams 1 Quart Metal Tray**

Case Count: 50  
Case Weight: 6.2  
Case Cube: 0.841

## METAL ROLLER TRAY

- Rust resistant.
- Sturdy ladder legs.
- Ribbed bottom.
- Bright finish.
- Top quality.



**11512**

**1 Quart Metal Roller Tray**

(accepts PTL 02120)  
Case Count: 24  
Case Weight: 21.2  
Case Cube: 3.407

## APPLICATION KITS

- Durable 4-wire cage frame.
- Cover 3/8" nap.
- 4" roller tray.
- Solvent resistant.
- Great for touch-ups and hard to reach places.



**70838**

**3 Pieces Mini-Trim Roller Kit**

Case Count: 24  
Case Weight: 14.4  
Case Cube: 3.383



**70828**

**4 Pieces Waterproofing Sealer Kit**

Case Count: 6  
Case Weight: 17.4  
Case Cube: 4.750

- 14" deepwell paint & sealer tray.
- 14" industrial roller frame.
- 42" wood extension pole.
- Cover 3/8" nap.

# ROLLER TRAYS AND LINERS

**DEEPWELL ROLLER  
TRAY & LINER  
05412 & 02132**



**05412**

**11" Deepwell Tray with Brush  
Rest (color may vary)**

Case Count: 20  
Case Weight: 14.2  
Case Cube: 1.828

**DEEPWELL ROLLER  
TRAY AND LINER  
45 & 75**

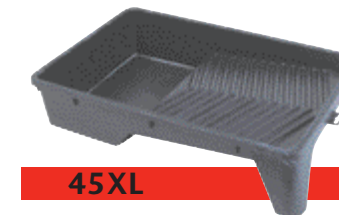


**45**

**3 Quart Tray**

Case Count: 12  
Case Weight: 10.0  
Case Cube: 2.903

**X-TREME DEEPWELL  
ROLLER TRAY AND  
LINER 45XL & 02160**

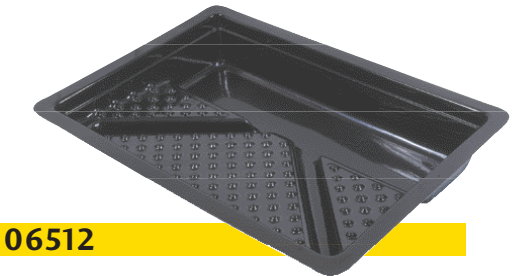


**45XL**

**5 Quart X-Treme Tray**

Case Count: 12  
Case Weight: 16.8  
Case Cube: 3.299

# PAINT & SEALER PLASTIC TRAY



**06512**

**22" Deepwell Paint &  
Sealer Tray**

Case Count: 6  
Case Weight: 7.0  
Case Cube: 1.296



**02132**

**11" Deepwell Liner with Brush  
Rest (Fits Encore 05412)**

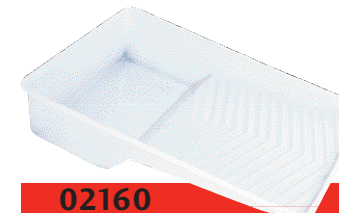
Case Count: 50  
Case Weight: 5.80  
Case Cube: .978



**75**

**3 Quart Deepwell Liner  
(Fits Encore 45)**

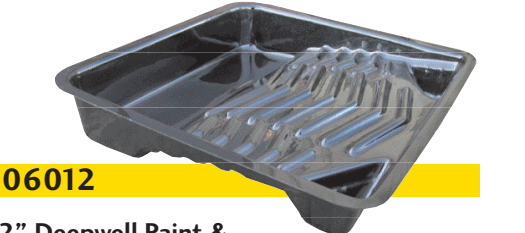
Case Count: 50  
Case Weight: 7.6  
Case Cube: .975



**02160**

**5 Quart Jumbo Tray Liner  
(Fits Encore 45XL)**

Case Count: 50  
Case Weight: 11.6  
Case Cube: 2.00

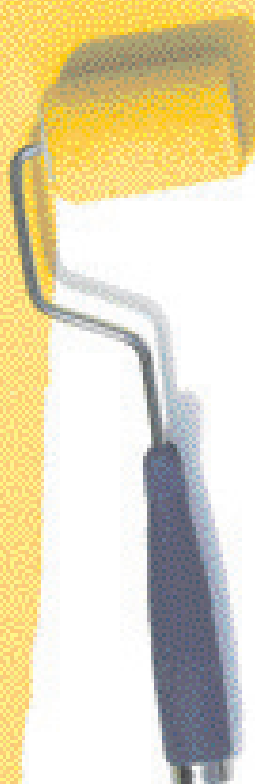


**06012**

**12" Deepwell Paint &  
Sealer Tray**

Case Count: 24  
Case Weight: 20  
Case Cube: 2.16

- Solvent resistant.
- Exact sizing prevents liner slipping in metal tray.
- Paint color changes are fast and easy.
- Liners are disposable for fast clean-up.
- Large selection of different styles and sizes.
- Matching trays on page 16.





# ACCESSORIES

- Fits gallon and quart paint cans.
- Snap-on pour spout.
- Keeps rim clean.
- Wiping edge saves paint.
- Disposable.



**82126**

**PAINT STRETCHER SPOUT**

Case Count: 100  
Case Weight: 2.8  
Case Cube: 0.219

Snaps onto inner rim



- Convenient wiping edge.
- Built-in brush holder (fits up to 4" brushes).
- Durable - for oil based paints and stains.
- Comfortable palm grip.



**82133**

**MINI PALM RIDER® EcoSmart**

Case Count: 14  
Case Weight: 6.8  
Case Cube: 1.013



Available in a 14 count Display Case

- Two-Pack.
- Liners for easy clean-up and color changes.
- Durable - for oil based paints and stains.
- Liners disposable.



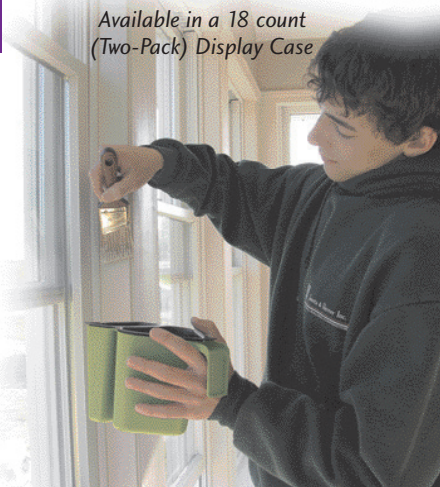
**82134**

**MINI PALM RIDER® LINER (Two-Pack)**

Case Count: 18  
Case Weight: 4.8  
Case Cube: 1.013



Available in a 18 count (Two-Pack) Display Case



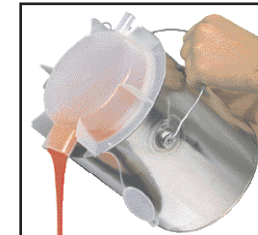
- Fits one gallon metal cans.
- Two spouts for pouring paint or stains, with maximum control.
- Great for storage.
- Cans "STACK" securely.
- Stored COLORS easily viewed.



**82111**

**STACK N' POUR™ Replacement Lid**

Case Count: 6  
Case Weight: 1.5  
Case Cube: .427



**TWO PAINT SPOUTS**

Available in a 6 count Display Case



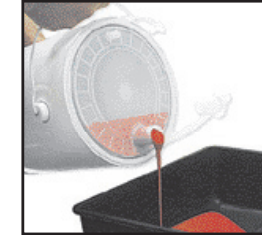
- Fits one gallon metal cans.
- Convenient pour spout.
- Snap-on cap for storage.
- Eliminates contamination.
- Re-usable.



**82125**

**EZ POUR™ REPLACEMENT LID**

Case Count: 24  
Case Weight: 3.0  
Case Cube: 0.591



- Two-Pack.
- Keeps product fresh.
- Solvent resistant.
- When Paint Saver is inserted into metal can, the air is pushed out, thus reducing product skimming.



**82108**

**PAINT SAVER™ GALLON STORAGE DISC**

Case Count: 12 - 2 packs  
Case Weight: 1.6  
Case Cube: 0.143



**FLOATS ON TOP OF PRODUCT**

- Fits standard 1 gallon metal cans.
- Restricts air flow to keep brush moist.
- Fits up to 4" brushes.
- Wiping edge saves paint.
- Keeps rim clean.
- Protects roller cover from drying out.
- Eliminates daily roller cleaning.
- Disposable.
- Safe with paints, stains and solvents.



**82101**

**BRUSH HOLDER EcoSmart™**

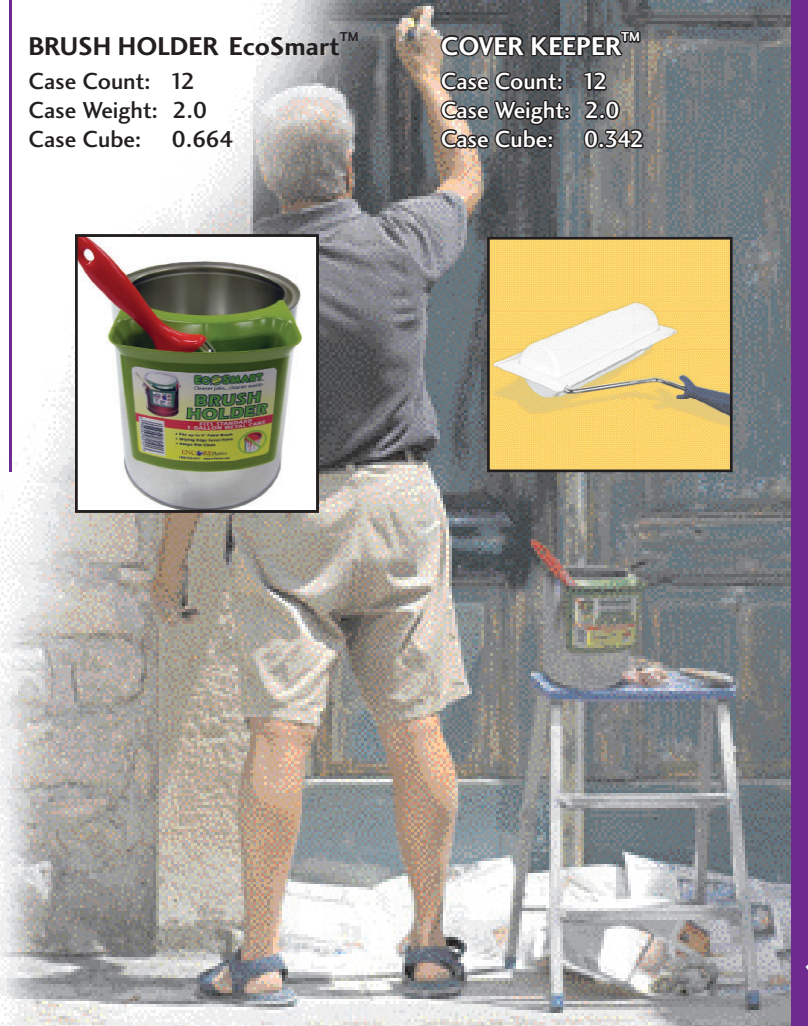
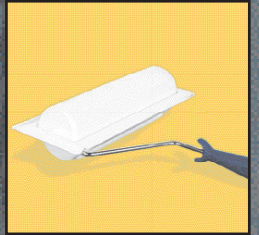
Case Count: 12  
Case Weight: 2.0  
Case Cube: 0.664



**82115**

**COVER KEEPER™**

Case Count: 12  
Case Weight: 2.0  
Case Cube: 0.342



# ACCESSORIES

- Turn a 5 & 6 gallon bucket into an airtight, leakproof and pest-proof storage container.
- Re-seals your bucket.
- Easy opening lid, spins on/off.
- Stackable.
- Use for storage of paints, finishes, dry food, grains, pet food and hardware supplies.



**82136**

**GAMMA SEAL® LID**

Case Count: 6  
Case Weight: 7.0  
Case Cube: 0.75



- Holds either quart or gallon metal cans.
- Keeps drips off floor covering.
- Provides place to lay paintbrush, paddle, rags, and other accessories.
- When locked in place can and tray move together.



**82103**

**FLOOR PROTECTOR™**

Case Count: 48  
Case Weight: 5.1  
Case Cube: 0.747



Available in a 48 count Display Case

- Designed for left & right hand use
- Brush bar
  - Wipe off excess paint
  - Convenient brush rest
- Perfect for varnishing, brush bar helps to eliminate bubbles.
- Handy "Bottom Grip".
- Solvent resistant.
- Disposable.



**82118**

**TOUCH N' TRIM™**

Case Count: 48  
Case Weight: 5.6  
Case Cube: 0.667



Available in a 30 count Display Case

**TOUCH N' TRIM™ DISPLAY CASE**

Case Count: 30  
Case Weight: 3.5  
Case Cube: 0.450

- Eliminates mess.
  - Air tight cap - keeps product fresh.
- TINT PLUG OPTION:**
- Squeeze ring to pull apart tint plug spout.
  - Snap spout into tint plug opening for easy pouring.



**82130**

**EZ POUR SPOUT™ 5 Gallon Fits Both Screw Top Lids and Tint Plug Lids**

Case Count: 24  
Case Weight: 1.8  
Case Cube: 0.251



Available in a 24 count Display Case

- Inexpensive alternative to aluminum.
- Protect walls, ceilings and trim from splatters.
- For painting, drywall and finishing work.
- Light weight and easy to handle.
- Will not rust.



**82107**

**28" SPRAY SHIELD™**

Case Count: 6  
Case Weight: 11.8  
Case Cube: 3.780



- Reaches all area of round container.
- Fits 3/8" drill.
- Stir paints, stains, and more...
- Avoid incomplete mixing.
- 1 gallon disposable.
- Re-usable.



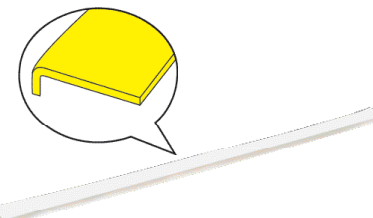
**82116**

**GALLON TURBO™ PAINT MIXER**

Case Count: 6  
Case Weight: 1.15  
Case Cube: .499



- Keeps paint off carpeting/flooring.
- Aids with painting below carpet nap.
- Quick n' Easy - cut painting time.
- Disposable.



6 SHIELDS= 18 FT. COVERAGE

**82104**

**FLOOR SHIELD**

Case Count: 20-6 packs per case  
Case Weight: 7.0  
Case Cube: 0.423



- Holes provide better agitation.
- Latex washes off easily.
- Made from recycled plastic.
- Re-usable.
- Mixing paints and stains.



**82114**

**PAINT PADDLE ONE GALLON**

Case Count: 630  
Case Weight: 31.4  
Case Cube: 1.520



# WELCOME to the ROUND-UP

Encore is proud to offer our full line of **DURANGO™** Caulking Guns.

Our full line commitment offers a wide variety of styles for both the Professional and the Do-it-Yourselfer. DURANGO™ caulking guns are manufactured from top quality materials and offer a wide range of features and benefits, which provide a unique combination of price and quality sure to set a new standard for value. Combining your DURANGO™ caulking gun order with other Encore products will help to maximize your purchasing position, significantly increase your margins and help to eliminate the need for multiple vendors.

The new gun in town, DURANGO™, pledges to maintain a competitive edge in quality, service and product selection while providing the best total value to you and your customers.

Your have found the smoking gun. 

## ECONOMY MODELS

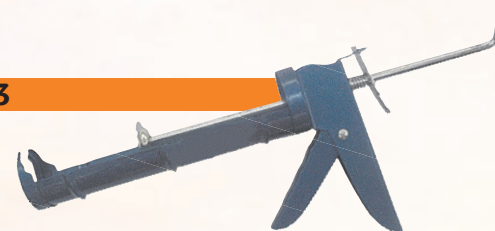
### SMOOTH ROD CRADLE

- 3:1 Power Rating
- Thumb Release

#### MODEL 51403

9" (1/10 Gallon)

Case Count: 24  
Case Weight: 23.4  
Case Cube: 1.23



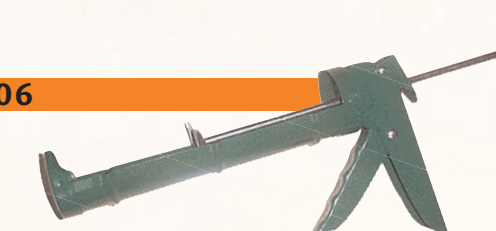
### RATCHET ROD CRADLE

- 6:1 Power Rating
- Thumb Release

#### MODEL 51106

9" (1/10 Gallon)

Case Count: 24  
Case Weight: 22.2  
Case Cube: 1.23



## DO-IT-YOURSELF MODELS

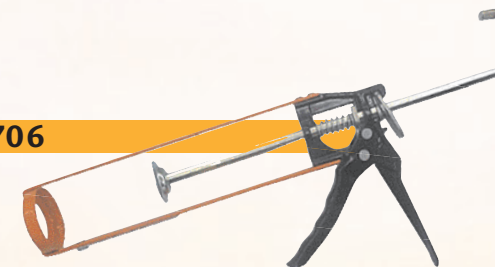
### HEX ROD PARALLEL FRAME

- 6:1 Power Rating
- Aluminum Handle
- Seal Punch Tool
- Ladder Hook
- Thumb Release

#### MODEL 33706

9" (1/10 Gallon)

Case Count: 12  
Case Weight: 14.2  
Case Cube: 0.59



### SMOOTH ROD CRADLE

- 3:1 Power Rating
- Spout Cutter
- Seal Punch Tool
- Ladder Hook
- Finger Guard
- Thumb Release

#### MODEL 32403

13" (Quart)

Case Count: 6  
Case Weight: 13.4  
Case Cube: 0.74



### RATCHET ROD CRADLE

- 6:1 Power Rating
- Spout Cutter
- Seal Punch Tool
- Ladder Hook
- Finger Guard

#### MODEL 32106

13" (Quart)

Case Count: 6  
Case Weight: 12.4  
Case Cube: 0.70



### SMOOTH ROD CRADLE

- 10:1 Power Rating
- Spout Cutter
- Seal Punch Tool
- Ladder Hook
- Thumb Release

#### MODEL 31410

9" (1/10 Gallon)

Case Count: 12  
Case Weight: 17.2  
Case Cube: 0.72



# DO-IT-YOURSELF MODELS

## HEX ROD CRADLE

- 10:1 Power Rating
- DRIP CONTROL™
  - Spout Cutter
  - Seal Punch Tool
  - Ladder Hook

### MODEL 31510

9" (1/10 Gallon)

Case Count: 12  
Case Weight: 17.2  
Case Cube: 0.76



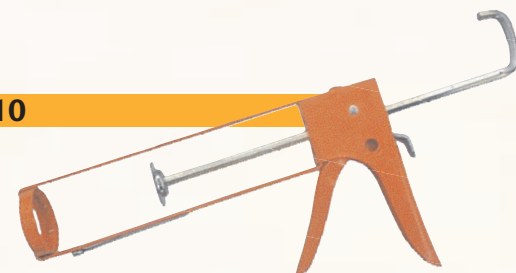
## HEX ROD PARALLEL FRAME

- 10:1 Power Rating
- Spout Cutter
  - Seal Punch Tool
  - Ladder Hook
  - Thumb Release

### MODEL 33710

9" (1/10 Gallon)

Case Count: 12  
Case Weight: 17.2  
Case Cube: 0.64



- Choosing the right gun for the job.
- All Durango™ caulking guns are packed in display cases.
- Convenient consumer guide chart to cut out and display near caulking gun section.

# PROFESSIONAL MODELS

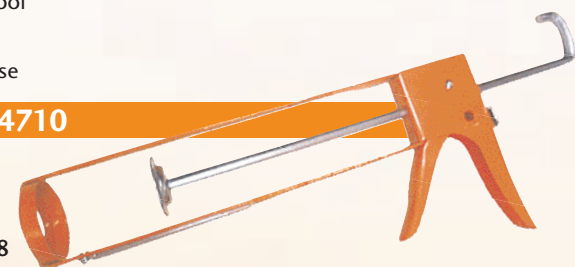
## HEX ROD PARALLEL FRAME

- 10:1 Power Rating
- Spout Cutter
  - Seal Punch Tool
  - Ladder Hook
  - Thumb Release

### MODEL 34710

13" (Quart)

Case Count: 6  
Case Weight: 14.8  
Case Cube: 0.77



## SMOOTH ROD PARALLEL FRAME

- 18:1 Power Rating
- Revolving Barrel
  - Zinc Alloy Handle
  - Seal Punch Tool
  - Ladder Hook
  - Thumb Release
  - Heavy Duty Construction

### MODEL 13418

9" (1/10 Gallon)

Case Count: 6  
Case Weight: 11.2  
Case Cube: 0.53



## SMOOTH ROD PARALLEL FRAME

- 18:1 Power Rating
- Revolving Barrel
  - Zinc Alloy Handle
  - Ladder Hook
  - Thumb Release
  - Heavy Duty Construction

### MODEL 14418

13" (Quart)

Case Count: 6  
Case Weight: 17.1  
Case Cube: 0.95



# CONSUMER GUIDE TO THE PERFECT BEAD

## Economy Models

## Do-it-Yourself Models

## Professional Models

Material Type	51403	51106	33706	32403	32106	31410	31510	33710	34710	13418	14418
Power Rating	<b>3:1</b>	<b>6:1</b>	<b>6:1</b>	<b>3:1</b>	<b>6:1</b>	<b>10:1</b>	<b>10:1</b>	<b>10:1</b>	<b>10:1</b>	<b>18:1</b>	<b>18:1</b>
Latex Caulks and adhesive	✓	✓	✓	✓	✓	✓	✓	✓	✓	✓	✓
Latex Construction Adhesive	✓	✓	✓	✓	✓	✓	✓	✓	✓	✓	✓
Polyurethane Adhesive										✓	✓
Gutter Adhesive						✓	✓	✓	✓	✓	✓
Blacktop Caulk										✓	✓
Roofing and Flashing										✓	✓
Silicones						✓	✓	✓	✓	✓	✓
Firestops										✓	✓
Aluminium and Metal						✓	✓	✓	✓	✓	✓
Window and Door						✓	✓	✓	✓	✓	✓
Kitchen and Bath						✓	✓	✓	✓	✓	✓



Encore Plastics Corporation

319 Howard Drive • Sandusky, Ohio 44870

Phone: 419-626-8000 Fax: 419-626-8095 Toll Free: 1-800-336-2673

[www.e-Encore.com](http://www.e-Encore.com)